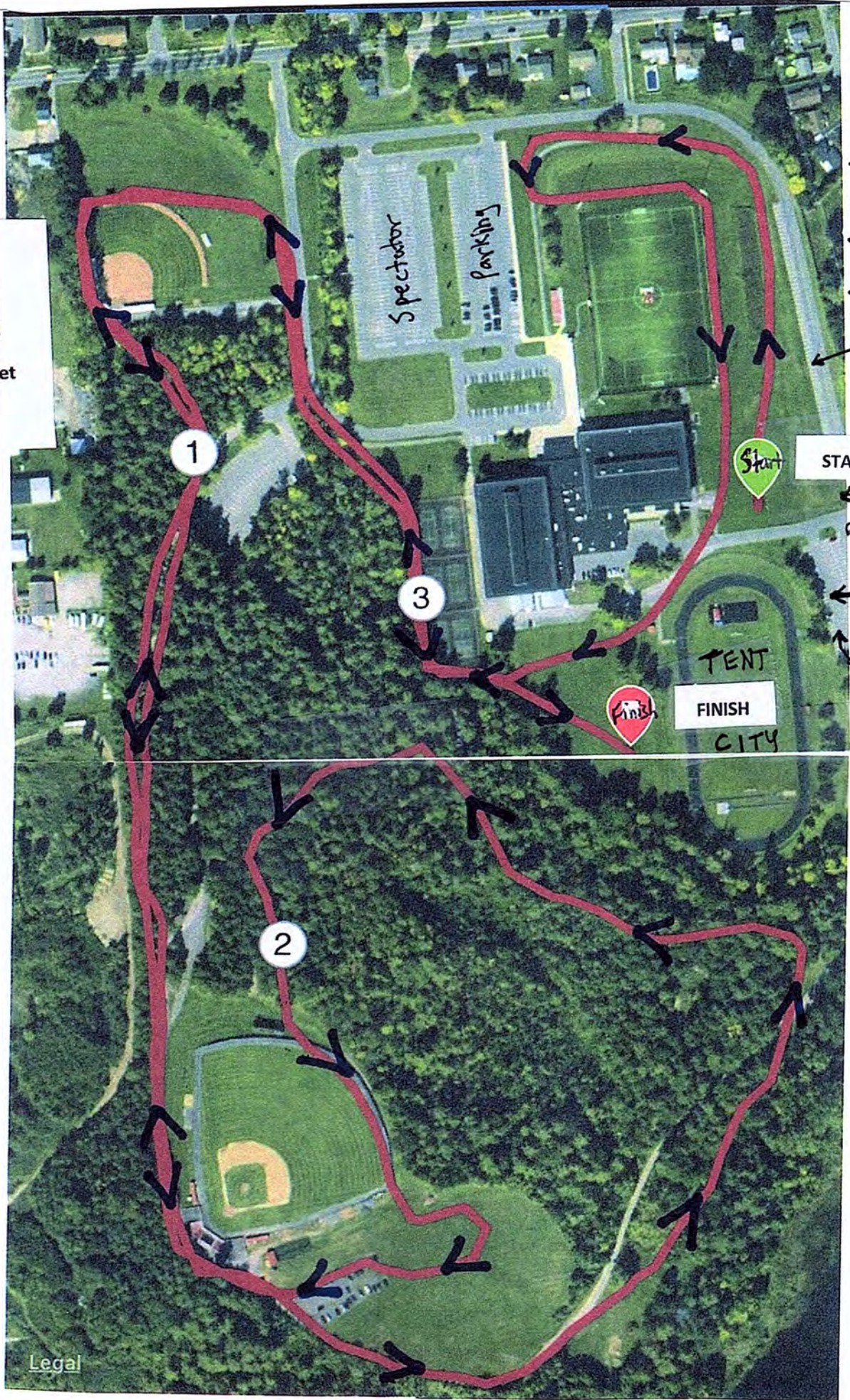


SUNY Plattsburgh  
Stafford Fieldhouse  
Section 7 NYSPHSAA  
2019 NYSPHSAA Meet  
Five Kilometers



Handicapped/Overflow Parking

START

Bust Drop off

Officials

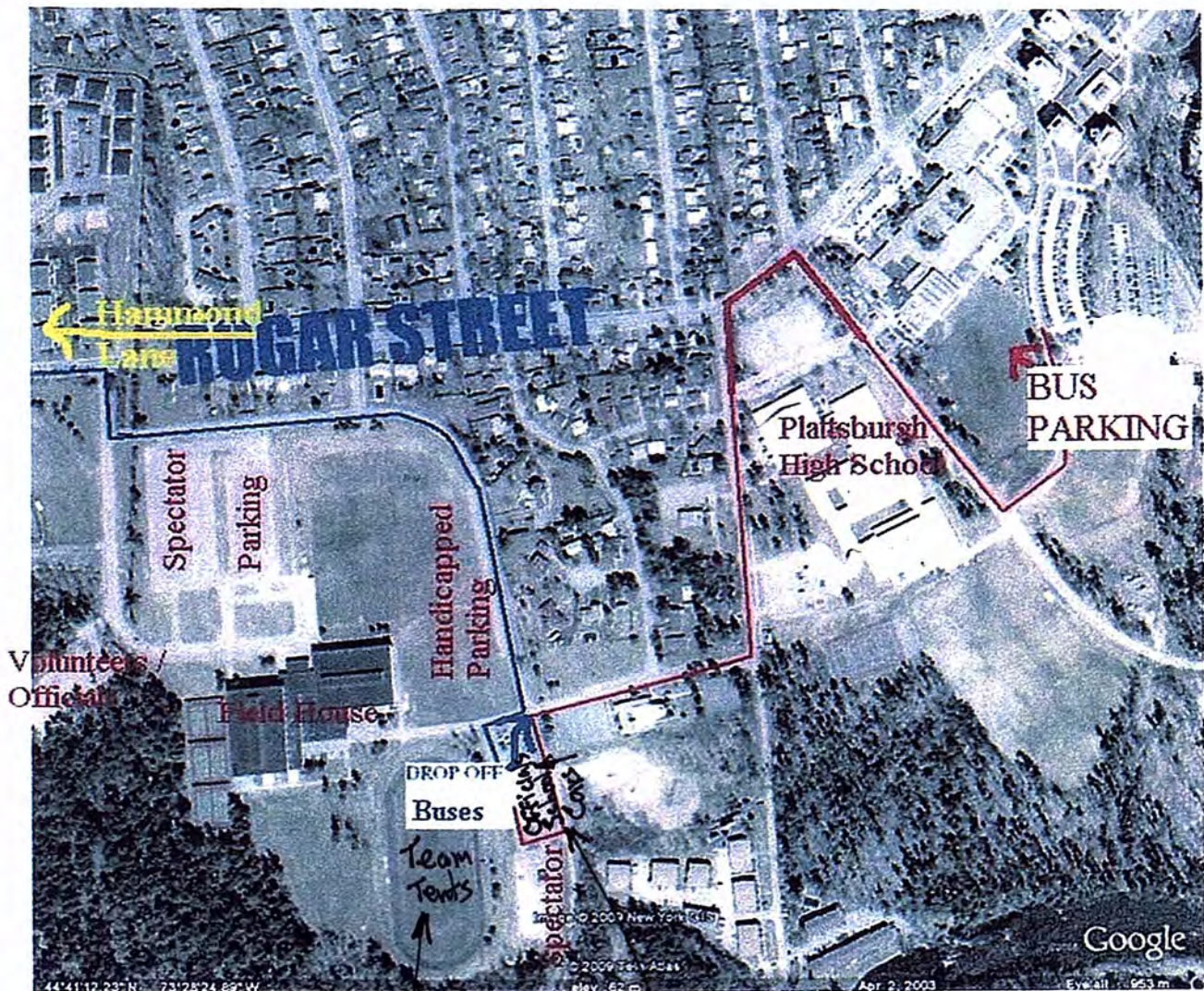
Small School Cars

FINISH  
CITY

Legal

**Parking at SUNY Plattsburgh for the Section 7 Invitational and the NYSPHSAA Cross Country Meets**

Please follow the parking instructions shown below on the map. From the Adirondack Northway take Exit 37 to Route 3 WEST (left lane on the exit ramp) and turn LEFT at the lights. Staying in the left lane on Route 3 WEST, take a LEFT turn at the first light past Days Inn onto Hammond Lane. Follow Hammond Lane to its end on Rugar Street. Turn LEFT onto Rugar Street and the Stafford Field House entrances will be just past the Stewarts and Sam's Club entrances to your RIGHT. There will be a **\$10 Parking Fee** at the Field House Lots. Charter and large school buses will drop off competitors and proceed to the parking lots behind Plattsburgh High School (Sibley Hall). There are fifty (50) handicapped parking spaces facing the start of the races along a short fence. There will be additional parking at Plattsburgh High School about ¼ mile walk from the Stafford Field House. With everyone's cooperation we can avoid bottlenecks in a congested area. Finally we are asking that dogs be left at home. Our start and finish areas are in close proximity and there really isn't room for pets as well as people.



Team Tents on track infield  
Officials School Cars